

# Circulation: Heart Failure

## ORIGINAL ARTICLES

**Prognostic Value of N-Terminal Pro-B-Type Natriuretic Peptide Levels in Heart Failure Patients With and Without Atrial Fibrillation**

### Editorial

**Lessons Learned and to Be Learned About the Use of N-Terminal Pro-B-Type Natriuretic Peptide in Heart Failure and Atrial Fibrillation**

**Early Right Ventricular Assist Device Use in Patients Undergoing Continuous-Flow Left Ventricular Assist Device Implantation: Incidence and Risk Factors From the Interagency Registry for Mechanically Assisted Circulatory Support**

**Precision Medicine for Cardiac Resynchronization: Predicting Quality of Life Benefits for Individual Patients—An Analysis From 5 Clinical Trials**

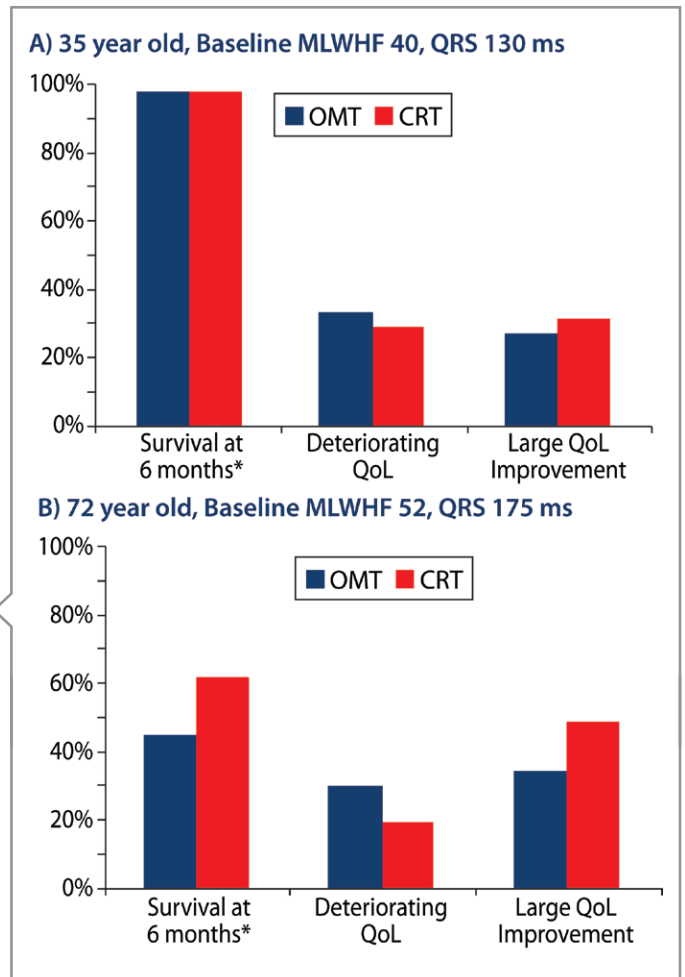
**Patient and Spousal Health and Outcomes in Heart Failure**

**Dose-Dependent Effects of the Myosin Activator Omecamtiv Mecarbil on Cross-Bridge Behavior and Force Generation in Failing Human Myocardium**

**Activation of Autophagy Ameliorates Cardiomyopathy in *Mybpc3*-Targeted Knockin Mice**

## ON MY MIND

**Is the Way to Someone's Heart Through Their Stomach? The Cardiorenal Paradox of Incretin-Based Hypoglycemic Drugs in Heart Failure**



10 (10)

*Circ Heart Fail.* 2017;10:

*Circulation: Heart Failure* is published by the American Heart Association, 7272 Greenville Avenue, Dallas, TX 75231

Copyright © 2017 American Heart Association, Inc. All rights reserved.  
Print ISSN: 1941-3289. Online ISSN: 1941-3297

The online version of this article, along with updated information and services, is located on the World Wide Web at:

<http://circheartfailure.ahajournals.org/content/10/10>

**Permissions:** Requests for permissions to reproduce figures, tables, or portions of articles originally published in *Circulation: Heart Failure* can be obtained via RightsLink, a service of the Copyright Clearance Center, not the Editorial Office. Once the online version of the published article for which permission is being requested is located, click Request Permissions in the middle column of the Web page under Services. Further information about this process is available in the [Permissions and Rights Question and Answer](#) document.

**Reprints:** Information about reprints can be found online at:  
<http://www.lww.com/reprints>

**Subscriptions:** Information about subscribing to *Circulation: Heart Failure* is online at:  
<http://circheartfailure.ahajournals.org/subscriptions/>