

Circulation: Heart Failure

EMERGING INVESTIGATORS

Coronary Artery Remodeling and Fibrosis With Continuous-Flow Left Ventricular Assist Device Support

ORIGINAL ARTICLES

Prognostic Significance of Creatinine Increases During an Acute Heart Failure Admission in Patients With and Without Residual Congestion: A Post Hoc Analysis of the PROTECT Data

Independent Prognostic Value of Serum Soluble ST2 Measurements in Patients With Heart Failure and a Reduced Ejection Fraction in the PARADIGM-HF Trial (Prospective Comparison of ARNI With ACEI to Determine Impact on Global Mortality and Morbidity in Heart Failure)

Pulmonary Capillary Wedge Pressure Patterns During Exercise Predict Exercise Capacity and Incident Heart Failure

Risk Factor Burden, Heart Failure, and Survival in Women of Different Ethnic Groups: Insights From the Women's Health Initiative

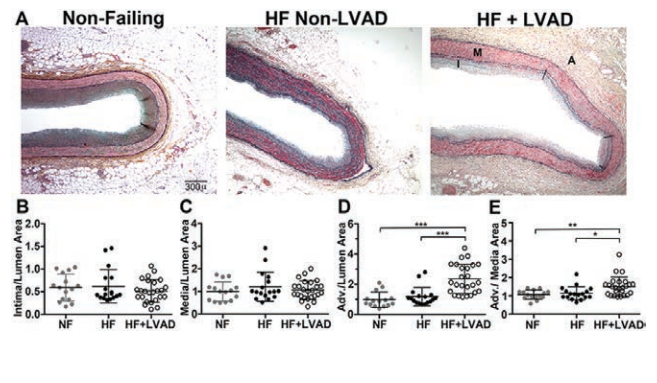
Left Ventricular Mechanical Unloading by Total Support of Impella in Myocardial Infarction Reduces Infarct Size, Preserves Left Ventricular Function, and Prevents Subsequent Heart Failure in Dogs

Editorial

Dog Model Holds Promise for Early Mechanical Unloading in Patients With Acute Myocardial Infarction

Load-Dependent Changes in Left Ventricular Structure and Function in a Pathophysiologically Relevant Murine Model of Reversible Heart Failure

Adventitial Remodeling with CF-LVAD Support



IMAGES AND CASE REPORTS IN HEART FAILURE

Internal Versus External Compression of a Left Ventricular Assist Device Outflow Graft: Diagnosis With Intravascular Ultrasound and Treatment With Stenting



11 (5)

Circ Heart Fail. 2018;11:

Circulation: Heart Failure is published by the American Heart Association, 7272 Greenville Avenue, Dallas, TX 75231

Copyright © 2018 American Heart Association, Inc. All rights reserved.
Print ISSN: 1941-3289. Online ISSN: 1941-3297

The online version of this article, along with updated information and services, is located on the World Wide Web at:

<http://circheartfailure.ahajournals.org/content/11/5>

Permissions: Requests for permissions to reproduce figures, tables, or portions of articles originally published in *Circulation: Heart Failure* can be obtained via RightsLink, a service of the Copyright Clearance Center, not the Editorial Office. Once the online version of the published article for which permission is being requested is located, click Request Permissions in the middle column of the Web page under Services. Further information about this process is available in the [Permissions and Rights Question and Answer](#) document.

Reprints: Information about reprints can be found online at:
<http://www.lww.com/reprints>

Subscriptions: Information about subscribing to *Circulation: Heart Failure* is online at:
<http://circheartfailure.ahajournals.org/subscriptions/>